



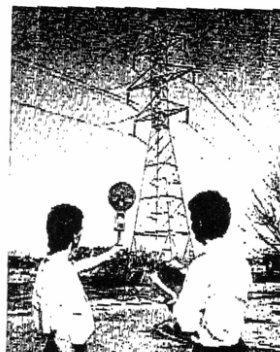
HI-3604 ELF Survey Meter

Combination Electric and Magnetic Field Instrument

The HI-3604 ELF Survey Meter is designed to evaluate both electric and magnetic fields associated with 50/60Hz power lines, line-powered equipment and appliances. It provides the engineer, industrial hygienist and health and safety professional with a sophisticated tool for accurate investigation of power frequency environments.

The custom LCD display indicates in milliGauss, Gauss, V/m and kV/m. A bar-graph analog indicator aids in quickly locating maximum field orientations and "hot spots".

Full auto-ranging and a sealed membrane switch control panel make the HI-3604 ideal for field surveys. The on-board data logging feature allows up to 127 readings to be saved in internal memory storage.



Power Line Survey Instrument
Wide Dynamic Range
On-Board Data Logging
Combination E & H Readings

Specifications

Frequency Range	30 – 2000 Hz
Frequency Response	± 0.5 dB (50-1000Hz) ± 2.0 dB (30-2000Hz)
Dynamic Range	0.2 mG – 20 G (Magnetic Fields) 1 V/m – 200 kV/m (Electric Fields)
Detection	Single Axis
Response	True RMS
Logging	On-Board, 127 Readings (max)
Remote Control	Via HI-3616 (remote output connects to data logger or chart recorder) Via HI-4413 RS232 Fiber Optic Modem for PC or Laptop
Environmental	10°C – 40°C 5% - 95% Humidity, Non-Condensing

Accessories

Custom Fitted Carrying Case
User Manual
HI-3616 Remote Control Readout (Optional)
HI-4413 RS232 Fiber Optic Modem (Optional)
Dielectric Tripod and Floorstand (Optional)



Holiday

Holiday Industries, Inc
14825 Martin Drive
Eden Prairie, Minnesota 55344
Telephone: 612-934-4820
Facsimile: 612-934-3604
E-mail: sales@holidayinc.com
Internet: www.holidayinc.com

Holiday Industries, UK
Shieling House, Invincible Road
Farnborough, Hants, UK GU14 7QU
Tel/Fax: (44) 1252 540955
E-mail: sales-eu@holidayinc.com